

★ 2019 ★

WALLER ISD

BOND ADVISORY
COMMITTEE

Thursday, March 7, 2019
5:30 p.m. - 9 p.m.

H. T. Jones Elementary, LGI Room
35753 Owens Road, Prairie View, TX, 77446

Dinner begins at 5:30 p.m.; Meeting content begins at 6 p.m.

Facilitator:
Michelle Hughes

TRANSCEND⁴
Collaboration | Communication | Critical Thinking | Creativity

Your Waller ISD Superintendent



Kevin Moran
Superintendent

Outcomes for Tonight

- Aligned work group; cohesive owners of the 2019 Waller ISD Bond Advisory Committee work
- Superintendent's Remarks
- Facilities Tour Debrief
- Instructional Quality for All Students
- Districtwide Capital Needs: Safety & Security; Technology; Transportation; Land
- Charge From Board of Trustees & Steps to Long-Range Facilities Plan
- Revised Meeting Schedule

Housekeeping

- All presented materials & information will be distributed to you as handouts and on the Waller ISD website; click on the 2019 Bond Advisory Committee button.
- Because of time constraints, no breaks have been scheduled. Please take breaks as needed.
- **Ask any questions.** Unanswered questions or answers to frequently asked questions will be posted on the Waller ISD website; click on the 2019 Bond Advisory Committee button.
- Your attendance at every meeting will help yield optimum results for this committee and this community.
- Those who miss three consecutive meetings will not receive further meeting notifications (unless absences are pre-communicated with district liaison).
- Catch-up work and gathering information from missed meetings is the responsibility of the committee member. Because of the large amount, complexity, and sequential nature of the presentations, no committee time will be allotted to remediating individuals at tables.

Ground Rules

- One conversation at a time; no sidebar talk; no visiting table to table
- Honor the time contract
- Stay on topic and on task
- Share ideas freely; no “duck shooting”
- Listen to understand; respect and honor others’ input
- Think holistically; sublimate personal agendas; consider the whole district
- Be kind
- Be honest
- Be relentless in pursuing consensus
- **HAVE FUN!**
- Silence electronic devices
- Share the conversation - at tables and in large group; don’t monopolize time, conversation or “report out” opportunities

Facilities Tour Debrief

- What did you see?
- How did you feel about what you observed?
- What are the implications if we do nothing? If we solve the problems?
- At this point, what do you believe might reflect a good solution?

Instructional Quality For All Students



Kelly Baehren
Chief Academic Officer



Shelly Elizalde
CTE Coordinator

GOALS

GAIN AN UNDERSTANDING OF THE EVOLUTION OF SCHOOLS, INSIGHT INTO TODAY'S LEARNERS, AND BEST PRACTICES RELATED TO THEIR NEEDS

RECEIVE TIMELY INFORMATION REGARDING DRIVERS IN EDUCATION

FAMILIARIZE THE GROUP WITH BEST PRACTICES INCORPORATING ARCHITECTURAL RESPONSES TO NEXT GENERATION LEARNING

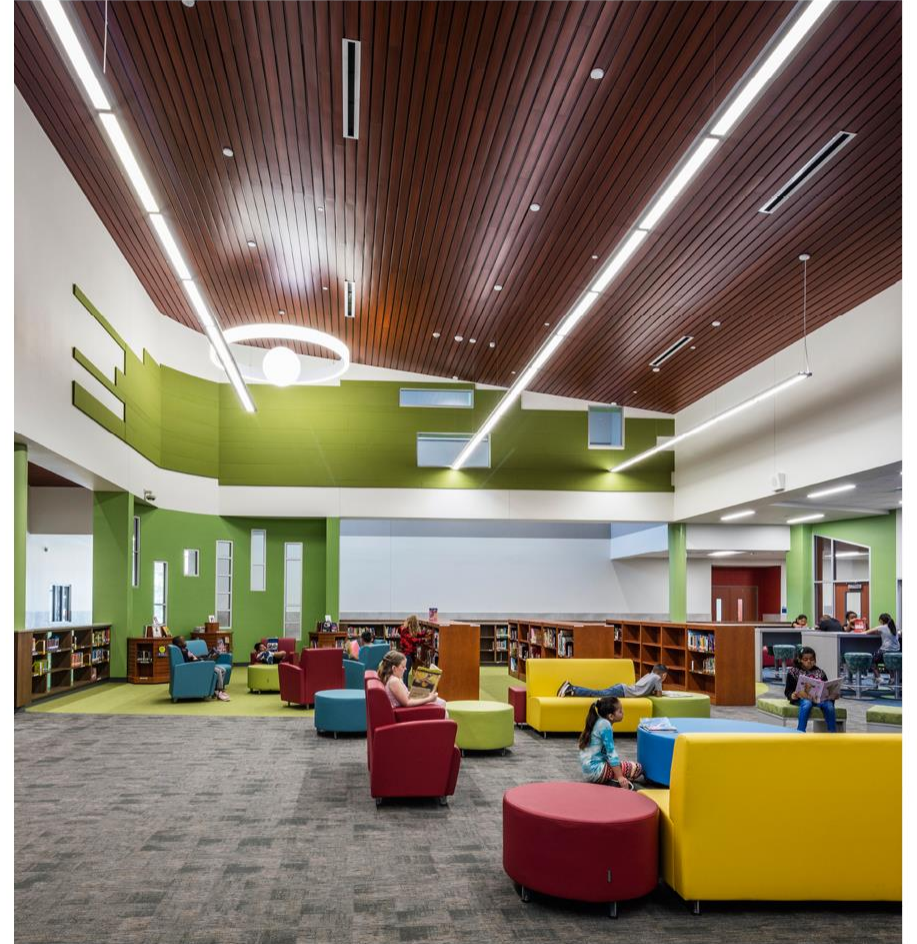
AGENDA

WALLER ISD TODAY

DRIVERS IN EDUCATION

CURRENT CONSTRAINTS

TRANSFORMATIVE LEARNING ENVIRONMENTS



WALLER ISD TODAY



INSTRUCTIONAL QUALITY FOR ALL STUDENTS
WALLER ISD

WALLER ISD TODAY

VISION | MISSION | PHILOSOPHY

VISION

All students will be successful learners and possess the skills necessary to function in the 21st century.

MISSION

The district believes that all students can be successful learners and graduate with skills that will allow them to compete in the twenty-first century workplace. It is therefore the intent of the district to serve all students regardless of their ability, environment, or national origin. Students will be provided opportunities to develop intellectually, physically, and socially through a quality system of teaching and learning. Through these opportunities, students will become responsible and productive members of a constantly changing society and world.

PHILOSOPHY

All schools and staff in Waller ISD are committed to positive, supportive interactions with students to ensure that all are successful learners.

- Goal 1:** WISD will continue to develop and support systems, programs, instructional standards, professionals, paraprofessionals and volunteers to enhance students' knowledge, skills, and performance in every adopted curriculum area. (Curriculum)
- Goal 2:** WISD will provide a safe, secure and respectful learning environment for students and staff. (Safety)
- Goal 3:** WISD will continue to retain, recruit, and acknowledge effective student-centered, highly qualified employees. (Human Resources)
- Goal 4:** WISD will provide a supportive, professional teaching environment that encourages teaching excellence. (Environment)
- Goal 5:** WISD will continue state and national leadership in the use of technology in all phases of the educational process. (Technology)
- Goal 6:** WISD will continue to prioritize two-way communication between Waller ISD and all patrons through all sources available and encourage relationships of trust and mutual support. (Public Relations)
- Goal 7:** WISD will provide the necessary financial resources for the support of the instructional program through prudent management and fiscal responsibility. (Fiscal and Resource Management)
- Goal 8:** WISD will provide co-curricular and extracurricular opportunities and programs for students as a means of preparing them for the future. (Enrichment Programs)
- Goal 9:** WISD will continue to emphasize the educational advantages for students, staff and community in a diverse environment. (Diversity)

WALLER ISD TODAY

DISTRICT SUCCESS

- Earned an “A” rating under the new state accountability system
 - Student Achievement 88/100
 - School Progress 90/100
 - Closing the Gaps 89/100
- Only 19% of school districts in the state earned an “A” rating
- Our College, Career, Military Readiness Indicator earned a score of 91
- Earned an “A” rating with the Financial Integrity Rating System of Texas
- All campuses “Met Standard” and cumulatively earned 18 Distinction Designations
- Waller ISD exceeded the state average in performance in 18/22 subject areas

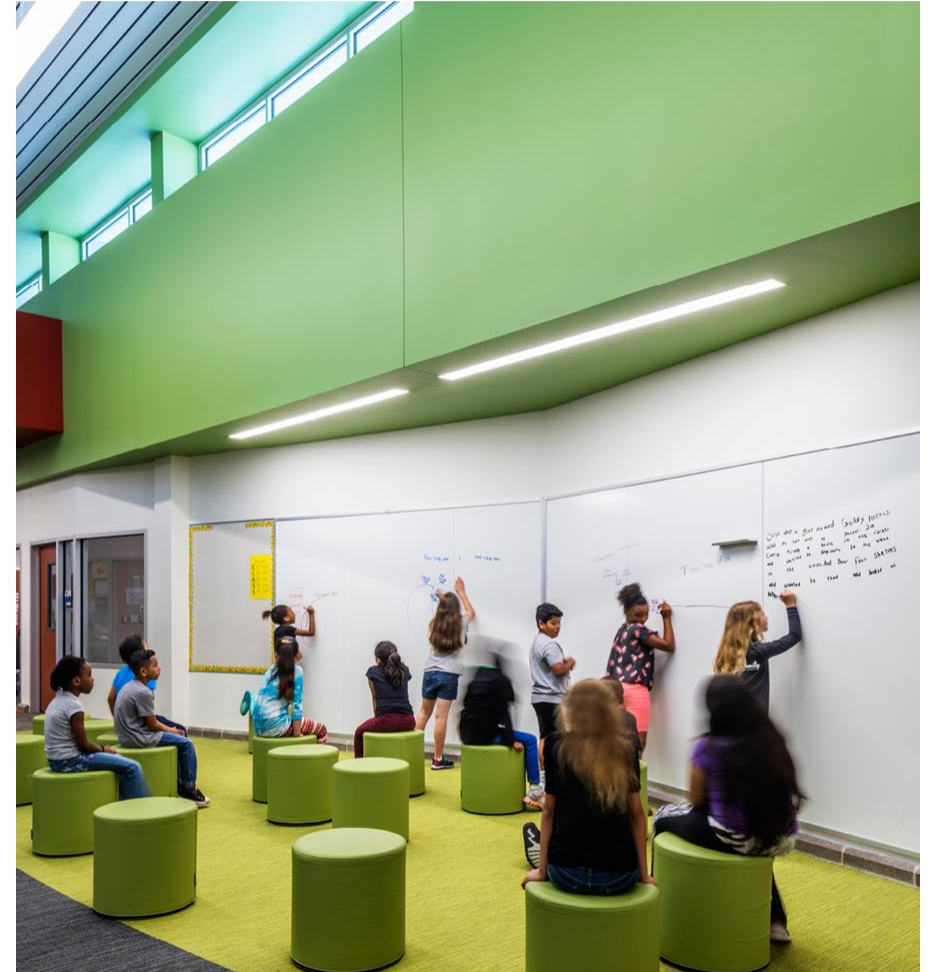


INSTRUCTIONAL QUALITY FOR ALL STUDENTS
WALLER ISD

WALLER ISD TODAY

- Media Center (Library) and Makerspaces
- Garland Linkenhoger Math Professional Learning
- Readers/Writers Workshop
- Collaboration Spaces Started with Turlington ES in 09/10 and continued with Jones ES in 17/18 and expansion of Roberts Road ES in 17/18
- Technology Integration

ELEMENTARY SUCCESS



INSTRUCTIONAL QUALITY FOR ALL STUDENTS
WALLER ISD

WALLER ISD TODAY

- Dual Credit Offerings in Partnership with LSC Tomball (43 credit hours available)
- Industry Certifications
- Interest Surveys at JH Drive 4 Year Graduation Plans
- Professional Learning Communities
- Media Center (Library) and Makerspaces
- Readers/Writers Workshop
- Technology Integration

SECONDARY SUCCESS



INSTRUCTIONAL QUALITY FOR ALL STUDENTS
WALLER ISD

CURRENT DRIVERS IN EDUCATION



INSTRUCTIONAL QUALITY FOR ALL STUDENTS
WALLER ISD

CURRENT DRIVERS IN EDUCATION

HOUSE BILL 5 EDUCATION REQUIREMENTS

Foundation High School Program

- 22 Credits + 1 Endorsement
- Authorized by House Bill 5

Endorsements Allow for Student Choice Based on Career Interest

- STEM
- Business and Industry
- Public Service
- Arts and Humanities
- Multi-Disciplinary Studies



History of CTE

Vocational Education 1984-1998

Limited Areas of Focus:

- Metal and Wood Shop
- Typing
- Home Economics



Career and Technology Education (CATE) 1998-2006

7 Program Areas are Added:

- Agriculture Science
- Business Education
- Family and Consumer Science
- Health Science
- Marketing
- Technology Education
- Trade and Industrial Education



Career and Technical Education (CTE) 2006-Present

16 Career Clusters That Encompass Multiple High-Demand, High-Skills, High-Wage Jobs:

See all the career
clusters on the next
slide

WISD Career Cluster Offerings



Architecture &
Construction



Health Science



Law,
Public Safety,
Corrections
& Security



Agriculture,
Food &
Natural
Resources



Arts, A/V
Technology &
Communications



Hospitality
& Tourism



Manufacturing



Information
Technology



Business
Management &
Administration



Marketing



STEM



Education &
Training



Finance



Human
Services

Cluster	2013-2014	2014-2015	2015-2016	2016-2017	2017-2018	2018-2019	Growth
Agriculture, Food, and Natural Resources	197	242	327	388	345	389	+192
Architecture and Construction	104	124	120	166	198	191	+87
Arts, Audio Video, and Communications	167	202	191	229	226	211	+44
Business, Marketing, and Finance	169	142	124	147	209	201	+32
Education and Training	0	0	29	21	22	31	+31
Health Science	255	304	428	534	555	656	+401
Hospitality and Tourism	161	100	181	152	187	176	+15
Human Services	75	60	80	93	108	89	+14
Human Services - Cosmetology	121	137	153	141	165	155	+34
Information Technology	29	27	27	32	40	37	+8
Law, Public Safety, Criminal Justice	144	170	173	178	137	149	+5
Manufacturing	182	229	338	346	323	334	+152
Work-Based Learning (Career Prep)	20	16	11	16	26	13	-7
STEM						30	+30
TOTAL CTE	1,624	1,753	2,182	2,443	2,541	2,662	+1038

2018 Accountability Ratings Comparison with Neighboring Districts

District	Overall Rating	% Industry Certifications for 2017 Grads
Waller ISD	A	23%
State of Texas	N/A	3%
Brenham ISD	C	0%
Bryan ISD	D	2%
Magnolia ISD	B	0.3%
Tomball ISD	A	0%
Cy-Fair ISD	Not Rated due to Harvey	6.5%
Katy ISD	A	0.9%
Hempstead ISD	C	9.2%
Royal ISD	Not Rated due to Harvey	9.1%

WHS Class of 2017 Graduates

Industry Certifications for A-F Accountability

Type of Certification	# of Certs
American Welding Society D1.1	56
Certified Nurse Aide	11
Cosmetology Operator License	24
Pharmacy Technician	6

Total: **97**

97/422 = 23%

WHS Class of 2018 Graduates

Industry Certifications for A-F Accountability

Type of Certification	# of Certs
American Welding Society D1.1	69
Certified Nurse Aide	19
Cosmetology Operator License	21
Certified Veterinary Assistant	1
Pharmacy Technician	8
	Total: 118

118/484 = 24%

CURRENT CONSTRAINTS

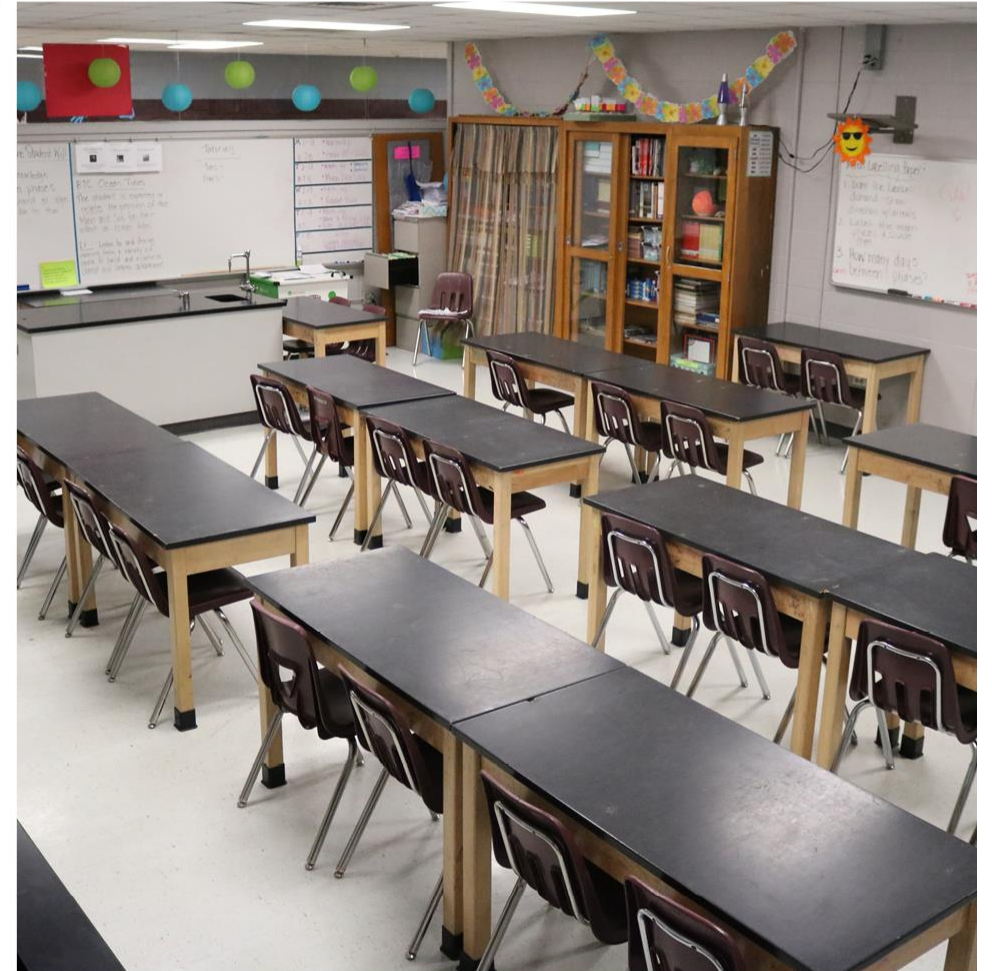


CURRENT CONSTRAINTS

No ability to add programs

Current facilities limit who can participate

Student safety in programs is a concern



CURRENT CONSTRAINTS



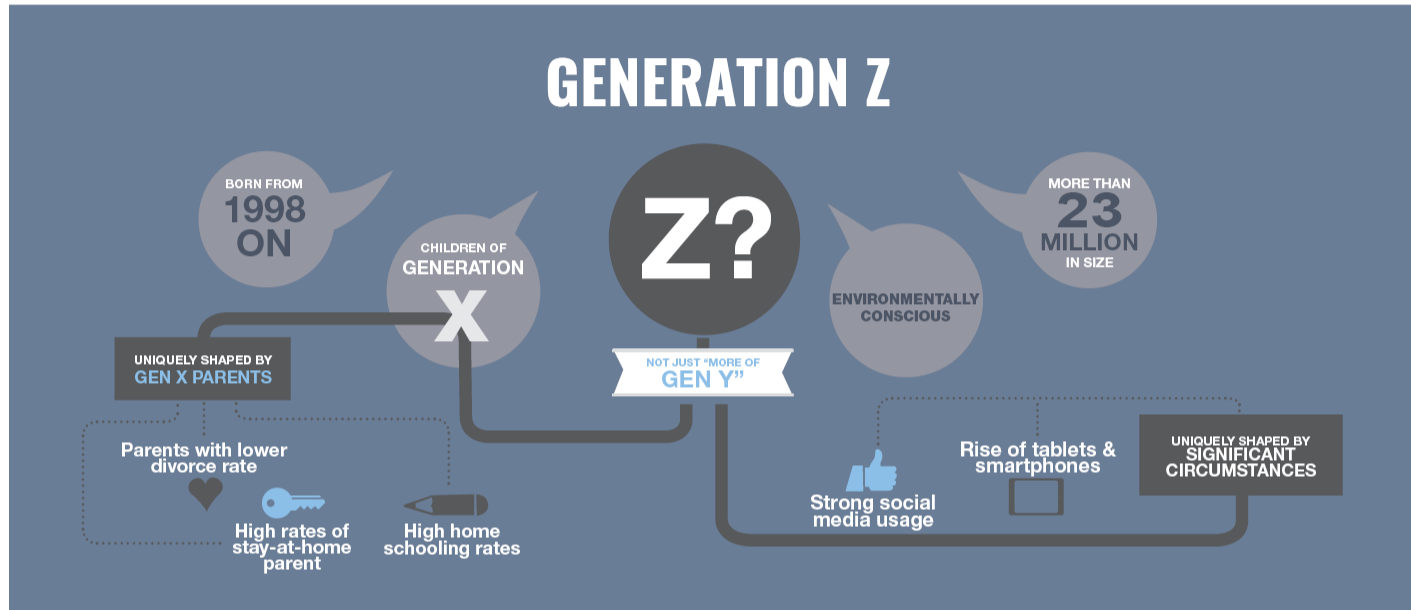
INSTRUCTIONAL QUALITY FOR ALL STUDENTS
WALLER ISD

TRANSFORMATIVE LEARNING ENVIRONMENTS



TRANSFORMATIVE LEARNING ENVIRONMENTS

GENERATION Z AND ALPHA



CORE CHANGES

ELEMENTARY SCHOOL CHILDREN

move from their egocentrism and develop language structure in order to begin to communicate logical thinking. They struggle with the abstract and hypothetical, but begin to wonder how others think and feel.

MIDDLE SCHOOL ADOLESCENTS

begin to understand abstract ideas. They develop moral philosophies including rights and privileges. They become comfortable establishing and maintaining relationships, and question the values of others.

HIGH SCHOOL STUDENTS

begin to find multiple solutions to problems. They use deductive reasoning, and can conceptualize the abstract. They question authority and seek role models while needing structure and craving autonomy.

GENERATION ALPHA

BORN BETWEEN 2010-2025

WILL TOP 2 BILLION BY 2025

2.5 MILLION BORN EACH WEEK

9K BORN EACH DAY

THE MAJORITY WILL EXIST AS ONLY CHILDREN

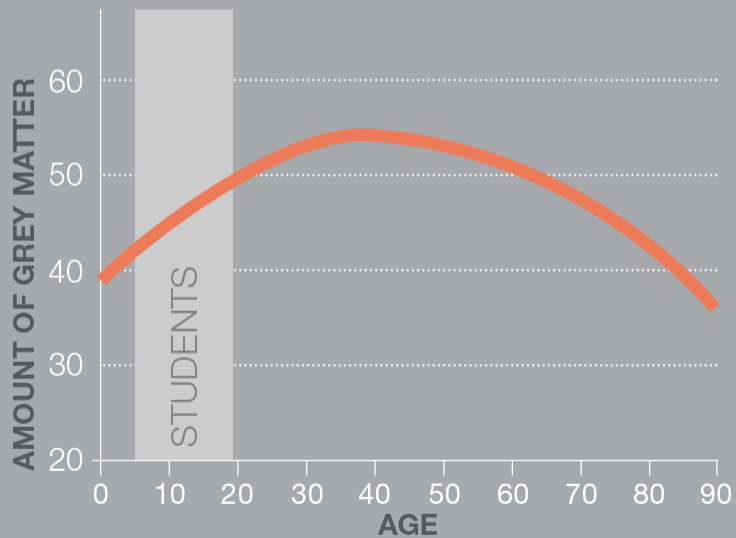
For millennial parents, screens = pacifiers

Prefer communications via IMAGES AND VOICE

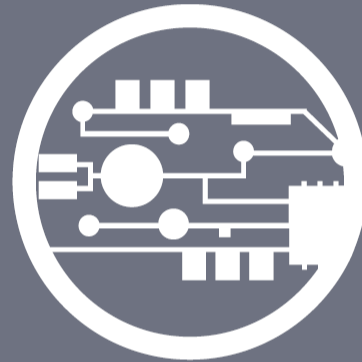
BUDDIBOX

BRAIN DEVELOPMENT

For many years it was believed brain development largely finished during the teen years. However, studies have found that the brain continues to change into the early 20s with the frontal lobes, responsible for reasoning and problem solving, developing last.



TECHNOLOGY

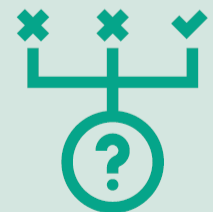


Students easily manipulate a variety of technology tools that contribute to their learning. Our newest generation is changing the way we communicate. They ask for schools to support their comfort level with technology, rather than have them discontinue its use during class time.



State standards and student learning styles are demanding an approach for observation, discovery, and experimentation. Students need active learning environments **regardless of the content or age level.**

INQUIRY-BASED LEARNING



TRANSFORMATIVE LEARNING ENVIRONMENTS

STUDENT LEARNING STYLES

VISUAL



- Learns by seeing
- Prefers pictures
- Sits close to visual displays
- Needs to see demonstrations
- Detail-oriented

AUDITORY

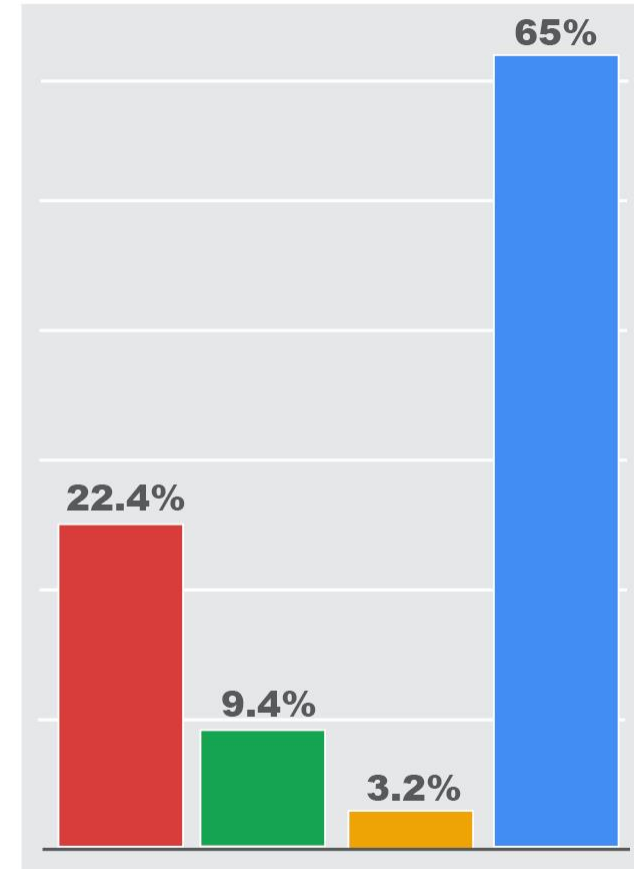


- Learns by hearing
- Prefers group work and collaboration
- Listens to tone of voice, pitch and speed of speech
- Sings/hums while working
- Easily memorizes lectures, songs, poetry

TACTILE/KINESTHETIC



- Learns by touching, experiencing, and manipulating
- Uses hands
- Prefers room to explore
- Needs to build, craft, and use materials
- Likes textures



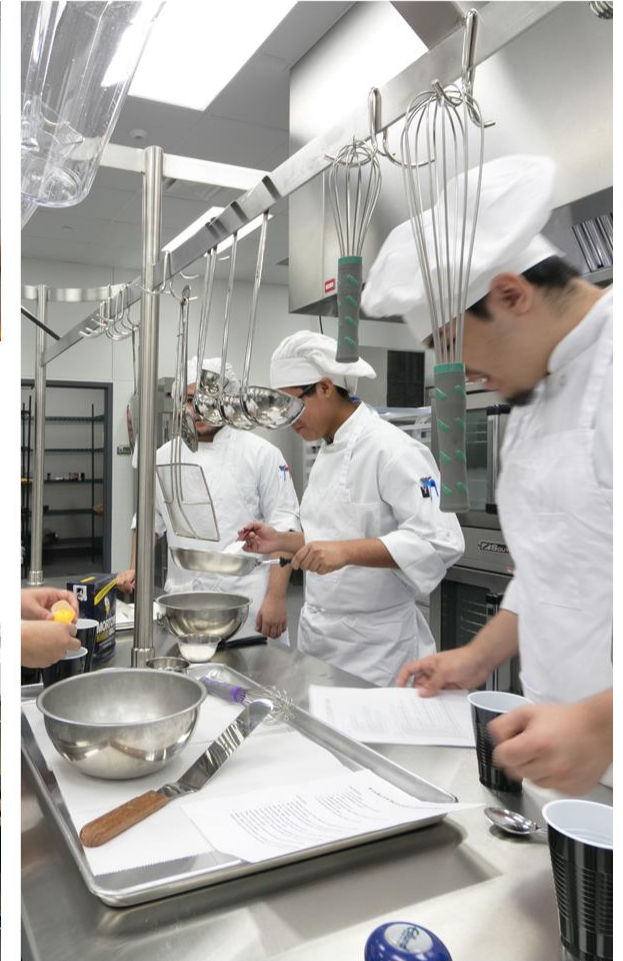
TRANSFORMATIVE LEARNING ENVIRONMENTS

TYOLOGY OF SPACES



TRANSFORMATIVE LEARNING ENVIRONMENTS

TYOPOLOGY OF SPACES



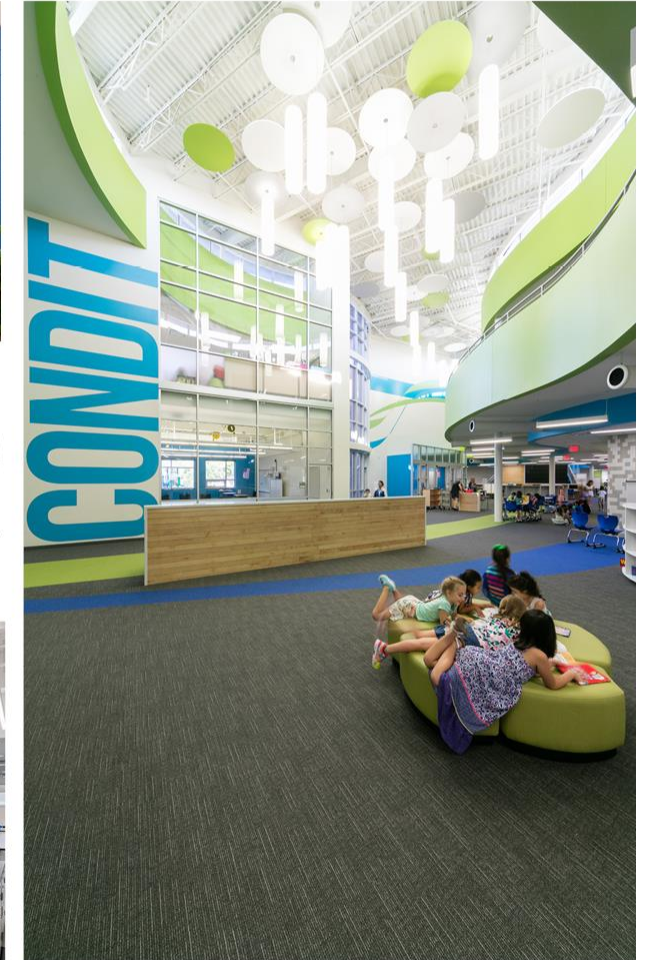
+CREATE
Classroom, Learning Studio, Flexible Learning Environment, Content-rich Space, Purposeful Learning Area



INSTRUCTIONAL QUALITY FOR ALL STUDENTS
WALLER ISD

TRANSFORMATIVE LEARNING ENVIRONMENTS

TYPOLOGY OF SPACES



DISCOVER

Science, Makerspace, CTE, STEM, Wet/Dry, Loud/Quiet, Messy, Library



INSTRUCTIONAL QUALITY FOR ALL STUDENTS
WALLER ISD

TRANSFORMATIVE LEARNING ENVIRONMENTS

TYOLOGY OF SPACES



EXCHANGE

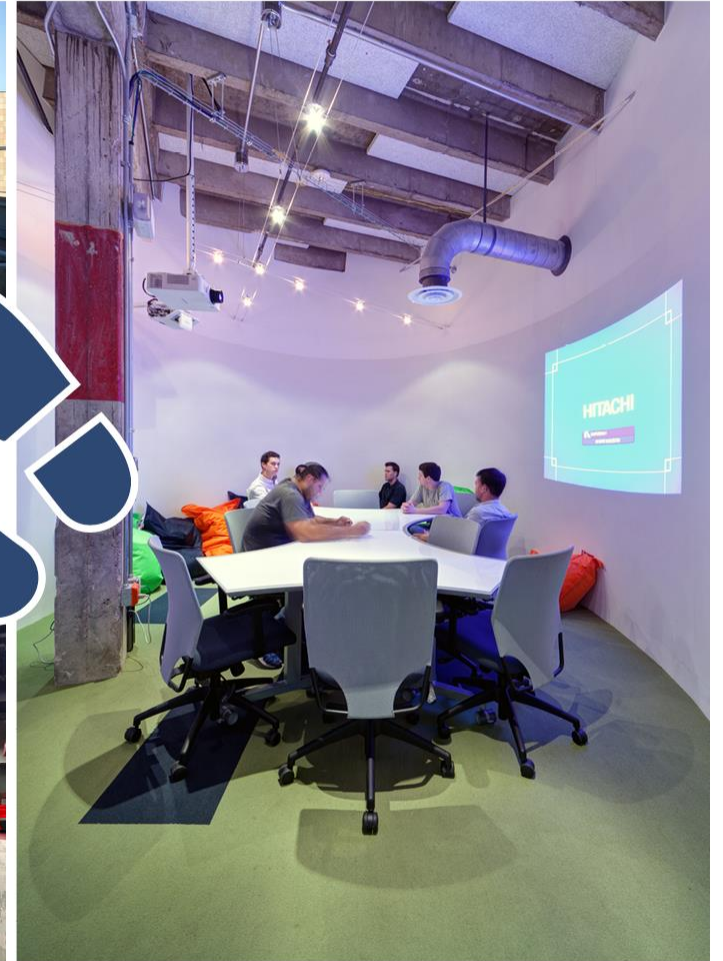
Large Collaboration



INSTRUCTIONAL QUALITY FOR ALL STUDENTS
WALLER ISD

TRANSFORMATIVE LEARNING ENVIRONMENTS

TYOLOGY OF SPACES



IMPACT

Mid-Sized Collaboration



INSTRUCTIONAL QUALITY FOR ALL STUDENTS
WALLER ISD

TRANSFORMATIVE LEARNING ENVIRONMENTS

TYOPOLOGY OF SPACES



INSTRUCTIONAL QUALITY FOR ALL STUDENTS
WALLER ISD

TRANSFORMATIVE LEARNING ENVIRONMENTS

TYOPOLOGY OF SPACES



Individual Breakout/Collaboration, Small Collaboration/Individual Study



INSTRUCTIONAL QUALITY FOR ALL STUDENTS
WALLER ISD

What Are Your **Questions,**
Comments or **Feedback?**

Districtwide Capital Needs: Safety & Security



Bennie Mayes
Chief of Schools-Secondary



Rosa Ojeda
Chief Information Officer

Safety & Security

Overall Concerns

- Perimeter Fencing
- Security Cameras
- Phone/PA System

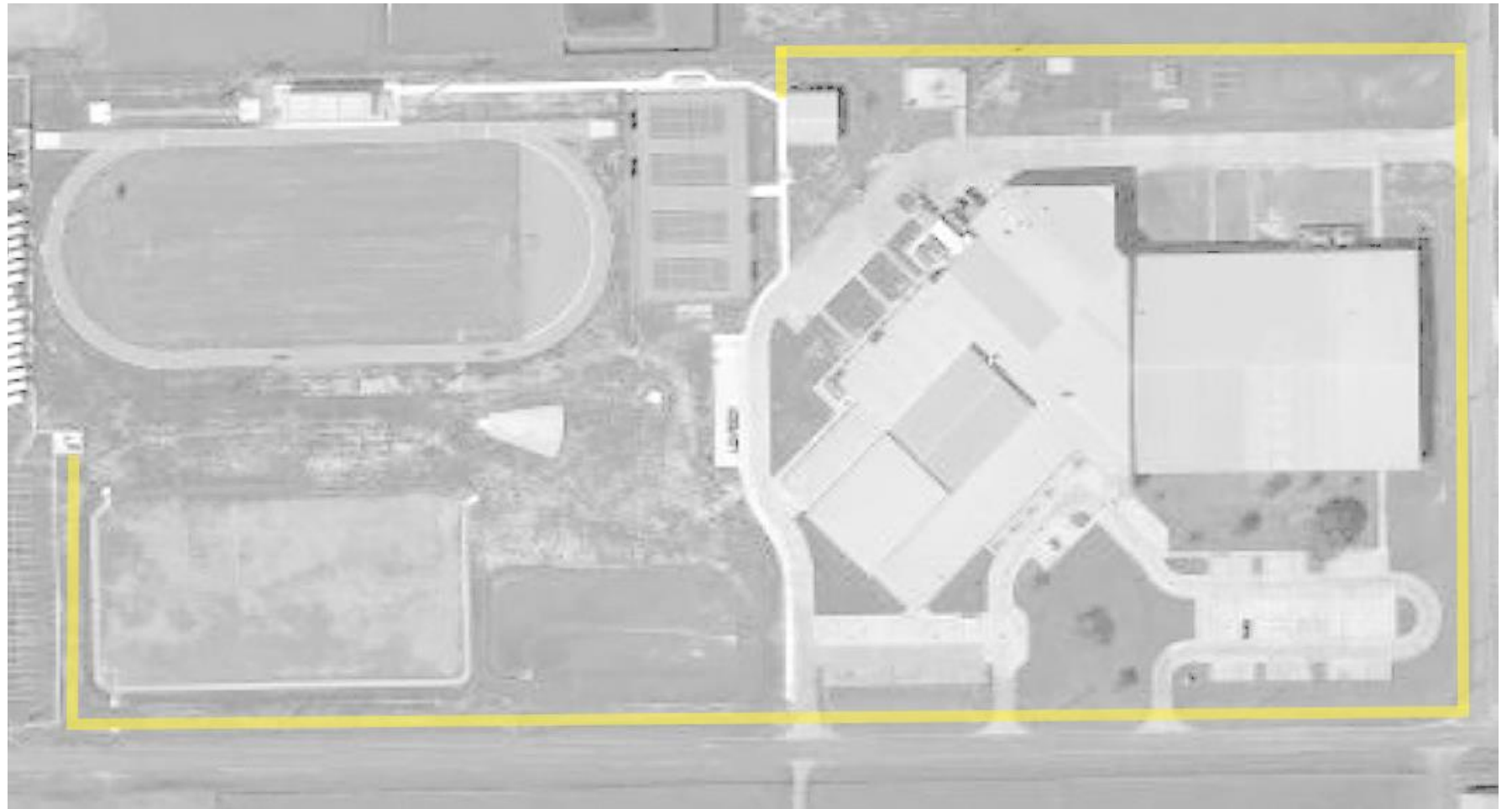
Existing Perimeter Fencing

- ✓ Field Store ES
- ✓ Holleman ES
- ✓ Jones ES
- ✓ Turlington ES
- Roberts Road ES
- Schultz JH
- Waller JH
- Waller HS

Roberts Road Elementary



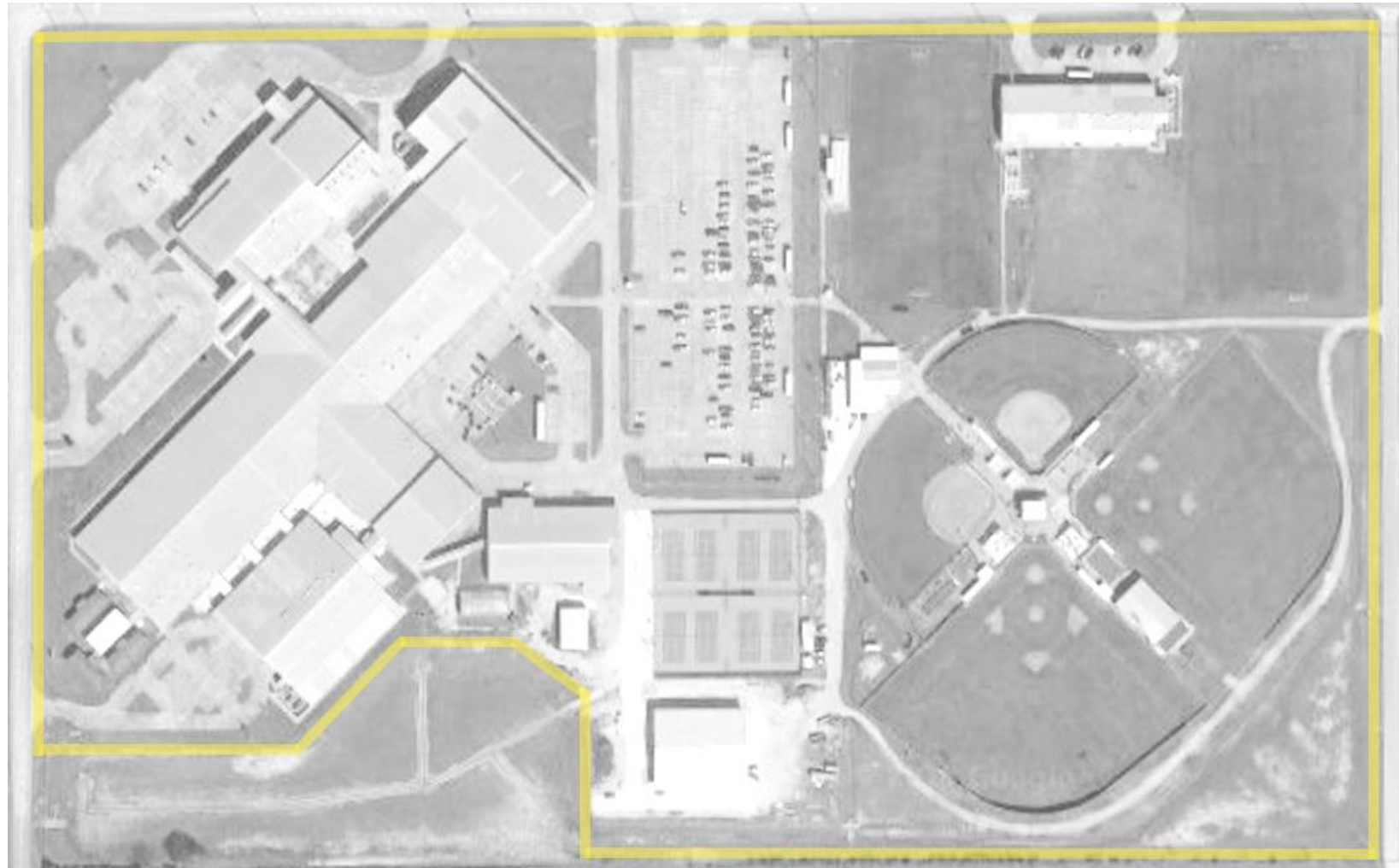
Schultz Junior High



Waller Junior High



Waller High School



Security Cameras



- Needed at WISD facilities districtwide to extend coverage outside
- Needed at WISD facilities districtwide to cover areas not monitored with current system
- Provides protection for property
- Allows for review and recourse of inappropriate activity
- Allows for screening of visitors at secured entries

Phone/PA System

Current system is...

- Inconsistent
- Limited
- Outdated

Updated system would...

- Allow universal management
- Ease moves/adds/changes
- Provide instant connectivity & PA messaging

Safety & Security

Item	Description/Location	Cost
Perimeter Fencing	Roberts Road ES	\$55,215
	Schultz JH	\$119,259
	Waller JH	\$89,802
	Waller HS	\$153,198
Security Cameras	175 cameras for use inside and outside	\$375,000
Phone/PA System	Installation, equipment, software, wiring districtwide (except Jones ES – already installed)	\$2.5 million
Total:		\$3.3 million

Districtwide Capital Needs: Technology Needs



Rosa Ojeda

Chief Information Officer

Sounds & Cafeteriums

Current system is...

- Unable to support student needs
- Limited in range
- Limited for student programs

Updated system would...

- Provide sound for baseball and softball
- Be used for PD for staff
- Enhance student programs

Technology Needs

Item	Description/Location	Cost
Elementary & Junior High (except JES)	Wireless mics, stage sound, projectors, wiring, audio/video connections (average of \$25k/campus)	\$175,000
Baseball/Softball Fields & Auxiliary Stadium	Sound system, PA/mic, speakers	\$50,000
Total:		\$225,000

Districtwide Capital Needs: Transportation



Angie Davis
Chief of Schools - Elementary

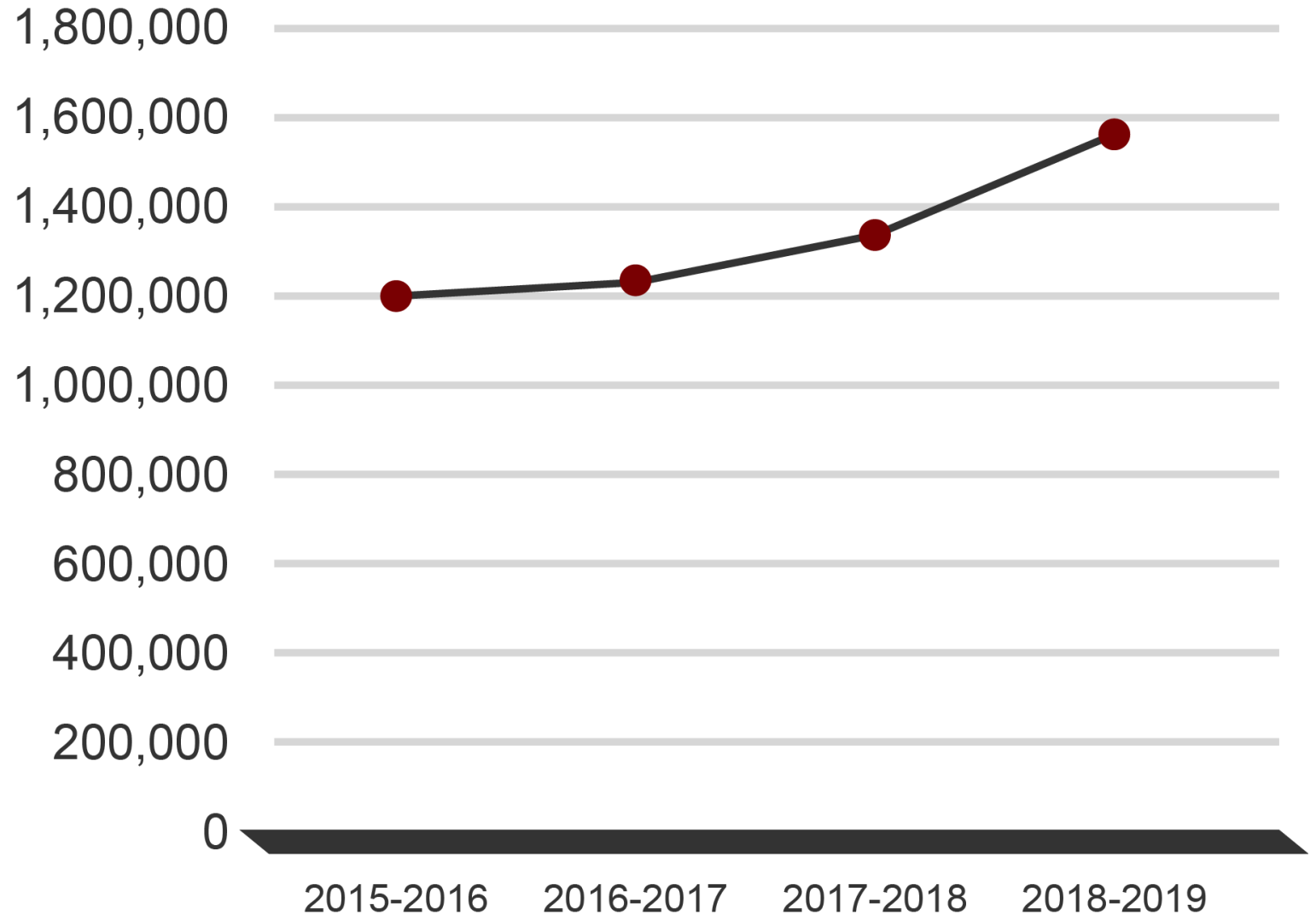
Transportation Overview

- Waller ISD spans **328 sq. miles**
- Buses Travel Over **7,100 miles daily**
- **Over 50%** of students ride our buses
- Currently Fleet of 124 Includes:
 - 95 Regular Buses
 - 20 Special Needs Buses
 - 2 Activity Buses
 - 7 Passenger Cars
- 48 of our current fleet is **10+** years old

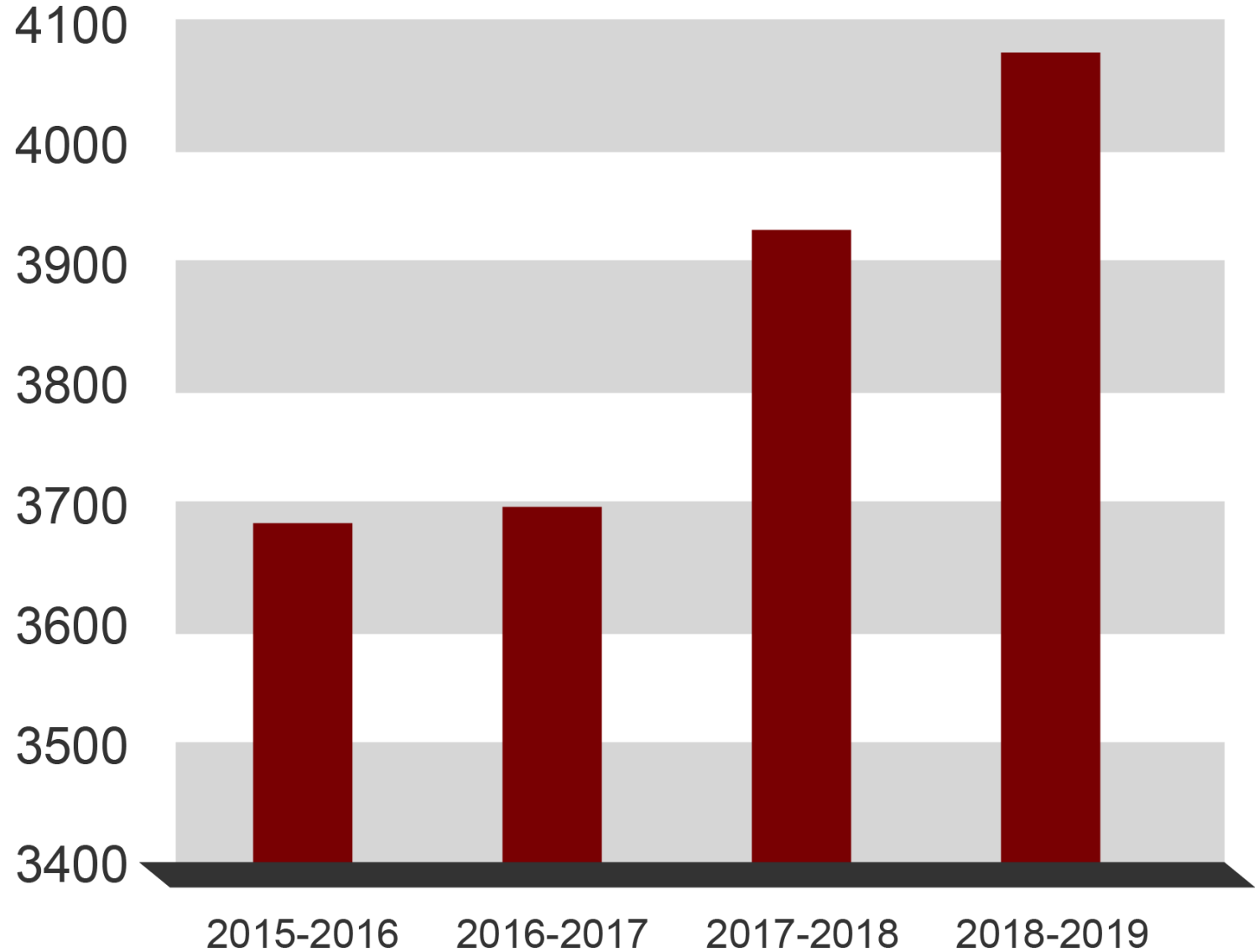
Considerations for Needs

- Ridership
- Aging Buses
- Added Routes
- Added Extracurricular Trips

Total Miles Traveled by School Year



Average Ridership by School Year



Transportation Needs

Description	Quantity	Cost
New buses to accommodate growth in 3 years	11 at \$100,000 each	\$1.1 million
New buses to accommodate growth in 5 years	13 at \$100,000 each	\$1.3 million
Replace buses older than 2005	32 at \$100,000 each	\$3.2 million

Total: \$5.6 million

Districtwide Capital Needs: Land



Kevin Moran
Superintendent

Land

- Current cost is approximately **\$3-\$6 per square foot**
 - Ex. ceiling tile (2' x 2') is \$12-24
- 1 acre = 43,560 sq. feet
 - 1 acre at \$3/sq. ft. = **\$130,680**
 - 1 acre at \$6/sq. ft. = **\$261,360**
- Land Needed for a School Site

HS: 75 acres

JH: 50-75 acres

ES: 15 acres

- Rising Costs

School Sites Needed

- According to PASA's demographic study, over the next 10 years we will need sites for:
 - 2-3 elementary schools
 - 1 junior high
 - 1 high school

Sites Currently Owned

- 1 elementary school
- 1 junior high
- <https://bit.ly/2C92kP5>

What Are Your **Questions,**
Comments or **Feedback?**

Charge From the Board of Trustees & Steps to Long-Range Facilities Plan



Kevin Moran
Superintendent



Todd Lien
VLK

Long-Range Facilities Planning Goals

	YES	NO
Develop Standard Size & Parity of Schools by Level		
Competitive with Surrounding Districts		
Increased Instructional Quality		
Develop Comprehensive CTE Program		
Future-Ready Technology		
Solve High School Overcrowding		
Solve Junior High Overcrowding		
Solve Aging Facilities		
Financially Responsible		
Minimize Tax Rate Impact		
Allow for Flexibility in the Future		

PROCESS OVERVIEW

LONG RANGE FACILITY PLANNING



PROCESS OVERVIEW

SEQUENCE OF ACTIVITIES

VISIONING	Nov 16 - Visioning discussion & District Needs Overview
DISCOVERY	Oct 26 - Nov 5 - Facility Assessments Nov 28 - Dec 4 - Educational Adequacy Assessments Nov 30 - District Leadership Presentation of Facility Assessment Findings Dec 8 - District Leadership Presentation of Long Range Facility Planning Effort
CITIZEN'S BOND PLANNING	Feb 7 & Feb 21 - Bond Advisory Committee Meetings

PROCESS OVERVIEW

NOV 16

LONG RANGE FACILITY PLANNING

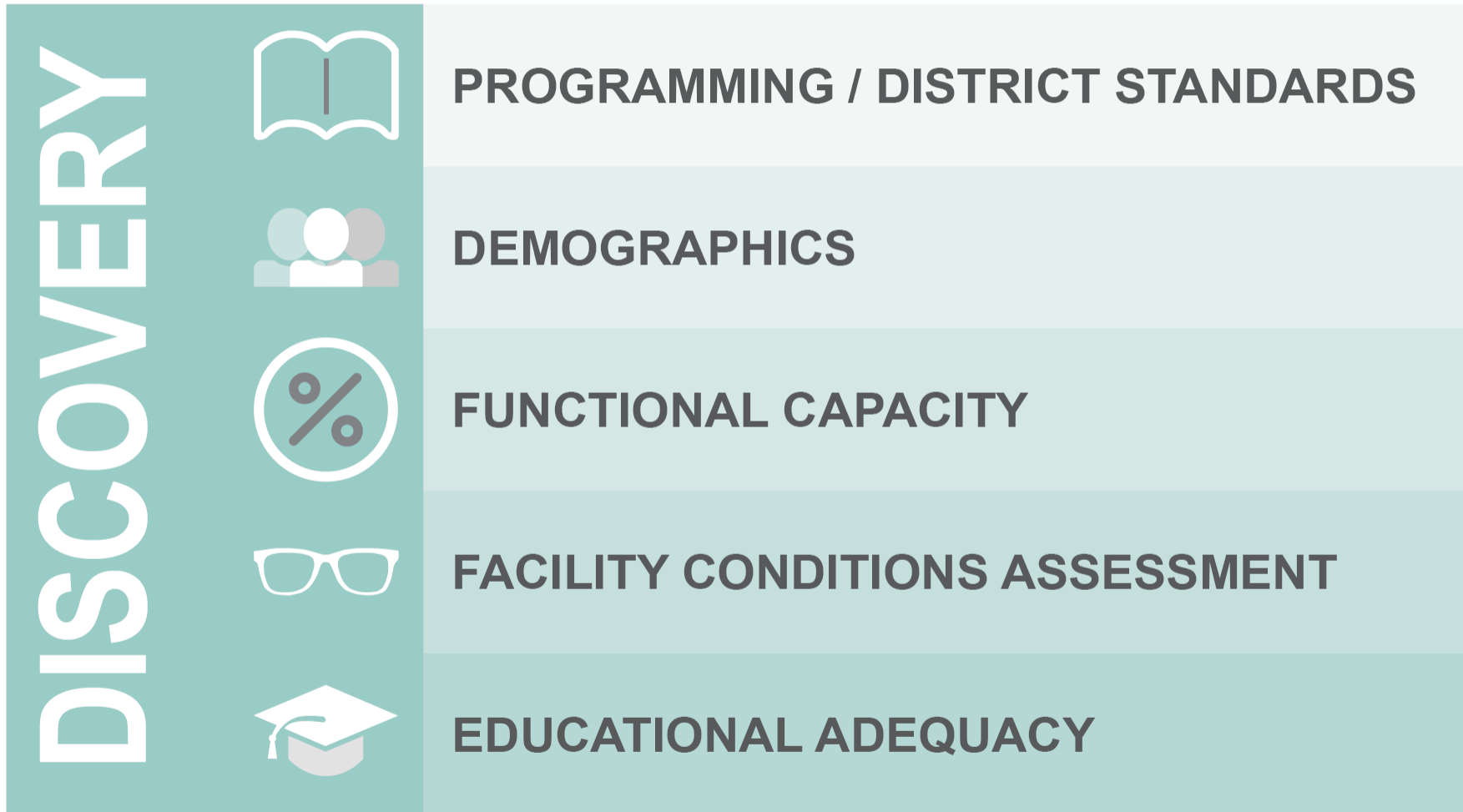
Creates a snapshot of potential facility needs of a District over a five-to-ten year time frame. The plan utilizes statistical or factual data that establishes facility needs, costs and timing of project execution.

VISIONING STRATEGY SESSION

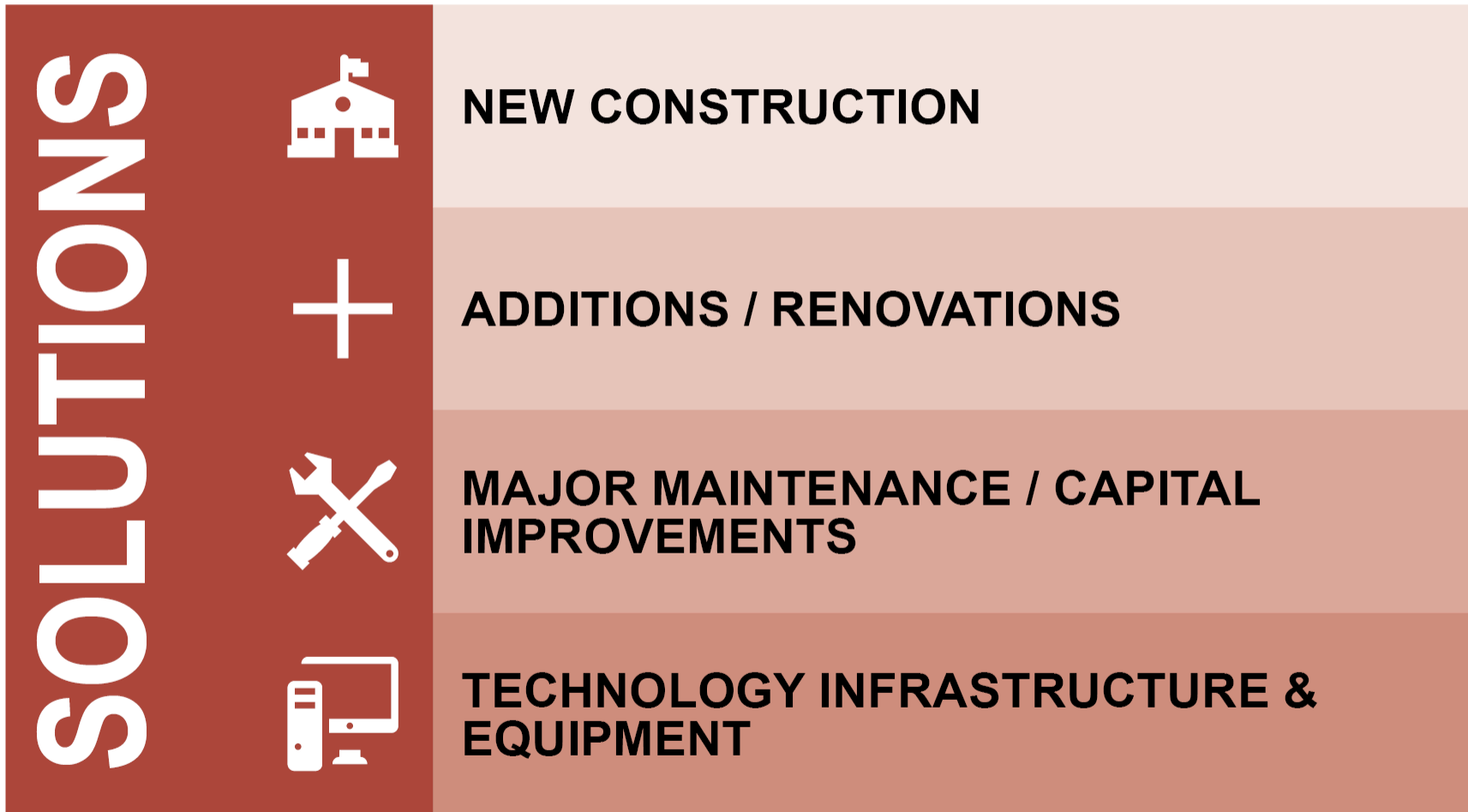
VLK Architects' process begins with a specialized introductory meeting or "Visioning Strategy Session", allowing us to gain a comprehensive understanding of the District's current needs and long term objectives. During this session, we establish a timeline and a series of steps that fits within an overall plan.

PROCESS OVERVIEW

OCT 26 - NOV 5 | NOV 28 | NOV 30



PROCESS OVERVIEW



PROCESS OVERVIEW

COST ESTIMATING



- Solutions are formalized
- Opinions of probable project costs
 - Right-sized square footage and programming
 - Appropriate unit costs
 - Contingency
 - On-site and off-site costs & soft costs
 - Furnishing fixtures
 - Equipment costs
 - Inflation

PROCESS OVERVIEW

PRIORITIZATION



PRIORITIZATION

Defining the highest priority initiatives to present to the Bond Advisory Committee.

Revised Meeting Schedule



Kevin Moran
Superintendent



Michelle Hughes
Transcend4

Revised Meeting Timeline

March 21: Facilities Assessment & Priorities, Long-Range Facilities Plan, Financial Outlook, Homework

April 18: Review, Discuss, Deliberate, Recommend

May 2: Review, SWOT Analysis, Select Member to Present to Board

May 16: If Needed

Process Checklist Likes/Wishes

LIKES:	WISHES:

Our Next Meeting Is...

Thursday, March 21, 2019

Buffet Dinner Beginning at 5:30 p.m.
Meeting Begins Promptly at 6 p.m.